

THERMOMAX

**SOLARLINK
SOFTWARE**

User Manual

ENGLISH

CONTENTS

THE INTERFACE	4
The Graphical User Interface	4
The Toolbar	5
The Status Bar	6
The Menus	7
The File Menu	7
The View Menu	9
The Comms Menu	9
The Options Menu	10
The Window Menu	13
The Help Menu	14
COMMUNICATIONS	15
Connecting A Device	15
Importing Data	15
Import 1 Day	15
Import 7 Days	15
Import All Days	16
Select no. of days	16
Communication Status	16
Monitor Mode	16
Monitor Mode - Temperature Values	17
Monitor Mode - Pump and AUX Status	17
Monitor Mode - Communication Status	17
GRAPHICS	18
The Calendar Bar	18
Displaying Information	19
Temperature Graph Mode	19
Table View Mode	20
Energy Graph Mode	21

THE INTERFACE

The Graphical User Interface

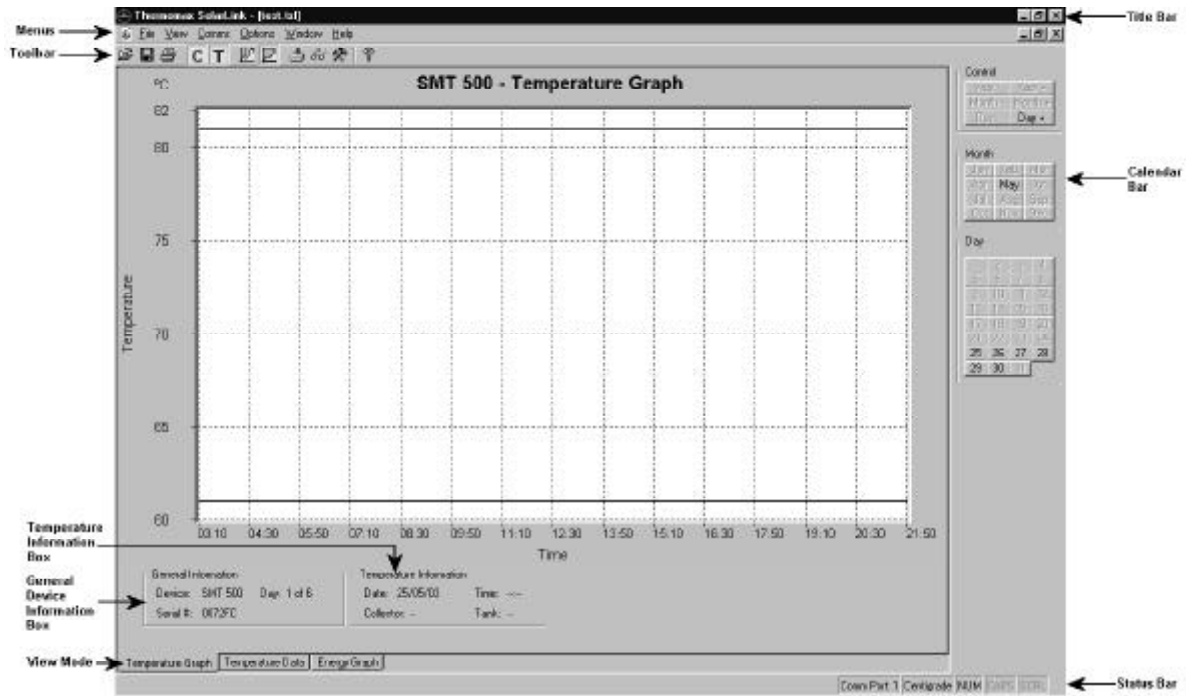


Figure 1 - The Graphical User Interface

A brief description of each element is given below:

Title Bar

The Title Bar displays the name of the application and if a file or files is open the name of the active file.

Menus

The Menus give the user access to all the functionality of SolarLink.

Toolbar

The Toolbar gives the user shortcuts to commonly used functions.

Calendar Bar

The Calendar Bar is used to navigate through the data in an active file.

Status Bar

Provides feed back to the user about which Com Port is selected, which measurement scale is selected and if CAPS, NUM or SCRL lock is on.

Temperature Information Box

This information box gives feedback on the location of cursor, if it is active.

General Information Box

This information box gives feedback on the device the data was downloaded from.

View Mode

This tab strip allows the user to choose how to view the information downloaded from the device.

The Toolbar



Figure 2 - The Toolbar

The Toolbar as explained earlier gives the user shortcuts to commonly used functions. These are explained below; from left to right:

Open

See page 7.

Save

See page 8.

Print

See page 8.

Toggle Collector Plot

This allows the use to toggle the plot line for the Collector On and Off.

Toggle Tank Plot

This allows the use to toggle the plot line for the Tank On and Off.

Toggle Cursor Mode

This allows the user to toggle the Cursor Mode On and Off. With Cursor mode on, the Temperature Information Box gives the user feedback on the current location of the cursor.

Toggle Autoscale

This function rescales the axis so that the plots are completely visible and as large as possible. Each day is Autoscaled individually, so the scale will change as the user navigates through the data.

Import Data

See page 10.

Monitor Mode

See page 10.

Configure Device

See page 10.

About

See page 14.

The Status Bar

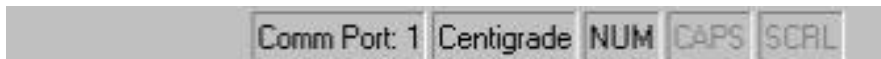


Figure 3 - The Status Bar

The panels in the Status Bar give the user feedback on the status of the application and the PC. The panels are described below; from left to right:

Comm Port: x

Where x is the selected Comm Port.

Temperature Measurement

This panel will display either Centigrade or Fahrenheit. The user can change this setting in the Preferences.

NUM Lock

If the panel text is greyed out then the NUM Lock is off. If the text is black then the NUM Lock is on.

CAPS Lock

If the panel text is greyed out then the CAPS Lock is off. If the text is black then the CAPS Lock is on.

SCRL Lock

If the panel text is greyed out then the SCRL Lock is off. If the text is black then the SCRL SCRL is on.

The Menus


The File Menu



Figure 4 - The File Menu

Open

The Open menu enables the user to open a data file, which has been previously downloaded from a device and saved to the hard disk of the computer. This option may also be selected from the

Toolbar using the  icon. By default, only files with a **.TSL** extension will be displayed.


Close

This option will close the current graphic window. **SolarLink** will prompt the user to save any information, which has changed since the last save. If the user chooses to ignore this prompt

then data or set-up changes may be lost.

Save As

The Save option enables the user to write data to the hard disk of the computer. This option may also be selected from the Toolbar

using the  icon. Having saved downloaded data, the user may retrieve it using the Open command. By default, files will be saved with a .TSL extension. If the data was previously saved, SolarLink will replace the file; otherwise the user will be prompted to enter a filename.

Export


This option enables the user to export data to a standard CSV (Comma Separated Values) file, which may then be imported to Microsoft® Excel or Lotus 123® spreadsheet software.

Print Setup

This option invokes the standard Windows® print set-up dialogues. For help on setting up a printer, please refer to either the Windows® help system or the Windows® user manual.

Print

This option enables the user to make a hardcopy of the current graphical display using a printer. This option may also be

selected from the Toolbar using the  icon. This option will invoke the standard Windows® print utilities. For help on configuration of printers, please refer to the Windows® help system or manuals.

Most Recently Used Files

The most recently used files list will contain the last 4 files to be opened by the user. It provides a quick and convenient method of reopening a file. Simply left click on the desired filename and the file will be reopened. If no files have previously been opened, then this list will be empty.

Exit

This option enables the user to exit SolarLink. If any files have been changed and not saved, then the user will be prompted to save them before the program is terminated.

The View Menu



Figure 5 - The View Menu

Toolbar

This option enables the user to either hide or display the toolbar. If this option is marked with a , then the toolbar is displayed. The state of the option is toggled each time this option is selected.

Status Bar

This option enables the user to either hide or display the Status Bar. If this option is marked with a , then the Status Bar is displayed. The state of this option is toggled each time the option is selected.

Calendar Bar

This option enables the user to either hide or display the Calendar Bar. If this option is marked with a , then the Calendar Bar is displayed. The state of this option is toggled each time the option is selected.

Align Calendar Bar

This option allows the user to choose on which side of the screen the Calendar Bar is docked. If **Align Left** is marked with a , then the Calendar Bar will be docked on the left hand side of the screen. If **Align Right** is marked with a , then the Calendar Bar will be docked on the right hand side of the screen.

The Comms Menu

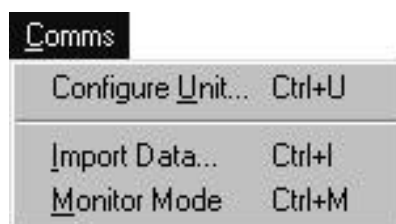




Figure 6 - The Comms Menu


Configure Unit

This option allows the user to configure the solar controller from the PC. This option may also be selected from the Toolbar using the  icon.

Import Data

This option enables the user to import information from the solar controller using the supplied RS232 lead. This option may also be selected from the Toolbar using the  icon.

Monitor Mode

This option enables the user to view the current temperatures and status at an interval defined in the Preferences. This option may also be selected from the Toolbar using the  icon.

The Options Menu



Figure 7 - The Options Menu

Preferences

There are three pages of preferences:

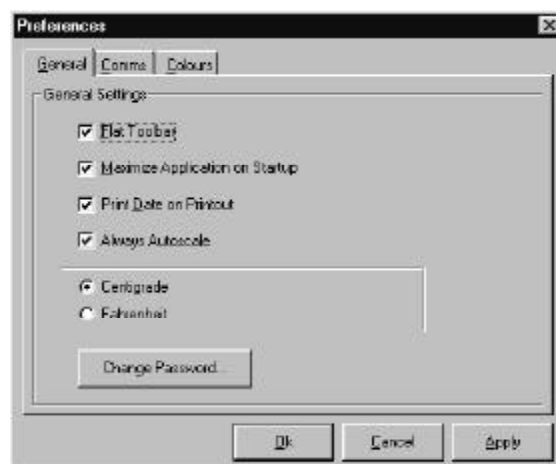


Figure 8 - Preferences, General Tab

This page of preferences allows the user to:

Flat Toolbar

Choose between the classical toolbar or the contemporary flat toolbar.

Maximize Application on Startup

Always maximize SolarLink on startup.

Print Date on Printout

Chooses whether or not to print today's date on the the printouts.

Always Autoscale

Choose whether or not to Autoscale the charts by default.

Choose Y axis scale

Choose between Centigrade or Fahrenheit.

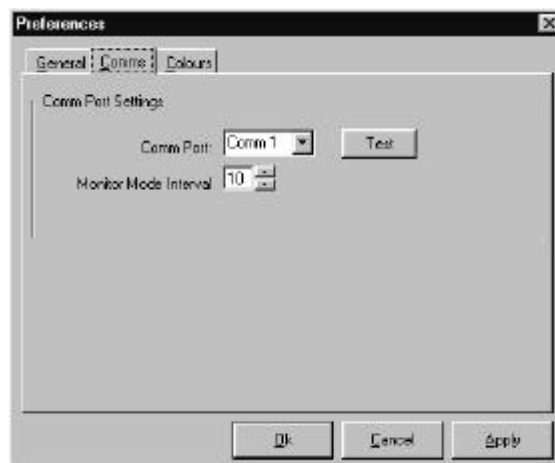


Figure 9 - Preferences, Comms Tab

Comm Port

This option enables the user to specify the communications port to which the monitoring device is attached. If the user tries to select a communication port, which is already in use or does not exist, then a warning message shall be displayed when the user tries to download or connect to their solar controller. If the user has connected a device to their PC they can use the **Test** button to verify they have selected the correct Comm Port.

Monitor Mode Interval

This option lets the user set an interval in seconds, between each download from the unit when it is in Monitor Mode. The lowest value is 1 second and the highest value is 60 seconds. It is strongly recommended that the user does not use a value lower than 10 seconds.

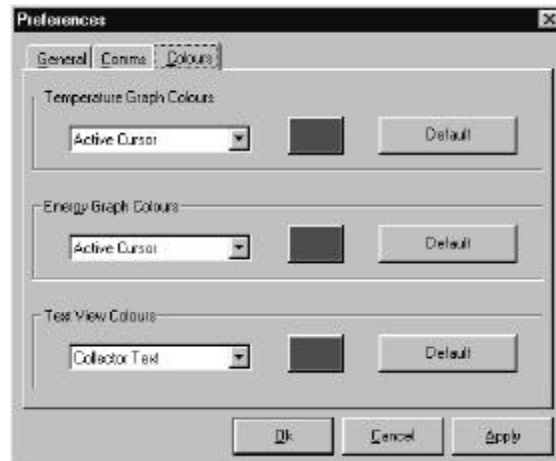


Figure 10 - Preferences, Colour Tab

Colours

Allows the user to pick their own default colour scheme and save it. Any new data that is downloaded will be in the newly selected colours.

Minimize to System Tray

This action allows the user to use the Monitor Mode function without having to keep the full application active. Once the user selects the function the application will appear as an icon in the System Tray as shown in Figure 11.



Figure 11 - Minimize to System Tray

To start the Monitor Mode function left click once on the icon. The Monitor Mode dialog will be shown. The interval set in the Preferences will be used for the interval between successive downloads. The Monitor Mode dialog will stay on top of all other windows while it is active. To restore the application, cancel the Monitor Mode Dialog and right click once on the icon.

Language

This option allows the user to choose between English or German.

The Window Menu



Figure 12 - The Window Menu

Cascade

This option enables the user to cascade multiple graphic windows. This is a standard Windows® option, please refer to the Windows® User Manual for further information.

Tile Horizontally

This option enables the user to tile multiple graphic windows horizontally. This is a standard Windows® option, please refer to the Windows® User Manual for further information.

Tile Vertically

This option enables the user to tile multiple graphic windows vertically. This is a standard Windows® option, please refer to the Windows® User Manual for further information.

Arrange Icons

This option enables the user to arrange the icons within the main display window. This is a standard Windows® option, please refer to the Windows® User Manual for further information.

Window List

This option displays a list of all open data windows. The currently active window is marked with a checkmark. The user may change the active window by using the mouse to click left upon the desired window. This is a standard Windows® option, please refer to the Windows® User Manual for further information.

The Help Menu



Figure 13 - The Help Menu

The About dialog tells the user the version number and gives them some contact information.



Figure 14 - About Dialog

This option may also be selected from the Toolbar using the



COMMUNICATIONS

Connecting A Device

A monitoring device may be connected to each spare communications port of the PC. All connections should be made using the cables supplied with the devices.

MasterLink supports the standard communication ports COM1 to COM16.

To use a particular communication port, the user should connect the device to the required port and then select the port from within SolarLink using the **Options → Preferences → Comms** menu.

If the selected communications port is already in use or is not present, then an error message will be displayed whenever the user tries to download or connect to their Thermomax unit.

Importing Data

To import data, the user should select the **Comms → Import Data** option. After having selected this option, a dialogue as shown in Figure 15 will be displayed. From this dialogue, the user may then select the type of import required.

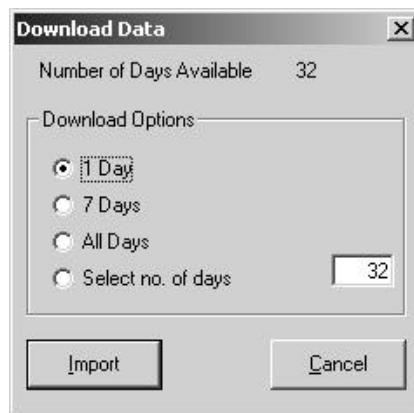


Figure 15, Comms → Import

Import 1 Day

This option will import the temperatures recorded today. As the information is being downloaded, a status window will display the progress.

Import 7 Days

This option will import the last seven days worth of temperatures. As the information is being downloaded, a status window will display the progress.

Import All Days

This option will import all the data stored in the connected device. As the information is being downloaded, a status window will display the progress.

Select no. of days

This option will import the number of days selected by the user, as in Figure 15, the last 32 days data. As the information is being downloaded, a status window will display the progress.

Communication Status

As the information is being imported, a status dialogue will be displayed on the screen. Figure 16 illustrates a typical example of this dialogue.

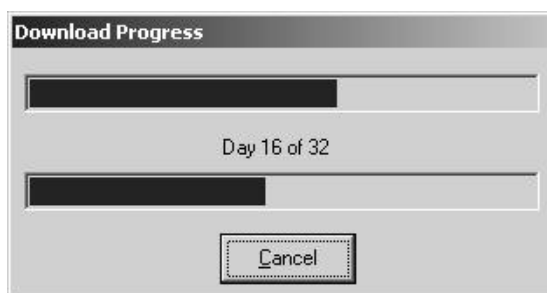


Figure 16 - Communications Status Dialog

If SolarLink is unable to communicate with the connected device, it will time-out after a period of 3 seconds and display a message indicating that communications have timed out.

Monitor Mode

Monitor mode is a method of importing the current channel values every. The interval is user definable in the Preferences.

To enter monitor mode, select the **Comms → Monitor Mode** option. This will cause the monitor mode dialogue to appear, as illustrated in Figure 17.

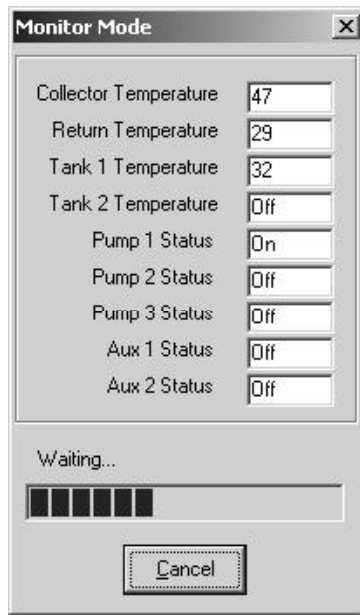


Figure 17 - Monitor Mode Dialog

Monitor Mode - Temperature Values

These are the actual values downloaded from the connected device. Any channels which are unavailable on the connected device will read '—'.

Monitor Mode - Pump and AUX Status

These are the actual status of the Pump and Auxiliary relays on the connected device.

Monitor Mode - Communication Status

The communications status indicates the status of the communications during Monitor Mode. When a set of values have been downloaded the blue bar will go back to zero and start growing. Once it reaches its full size, another set of values will be downloaded.

GRAPHICS

The Calendar Bar

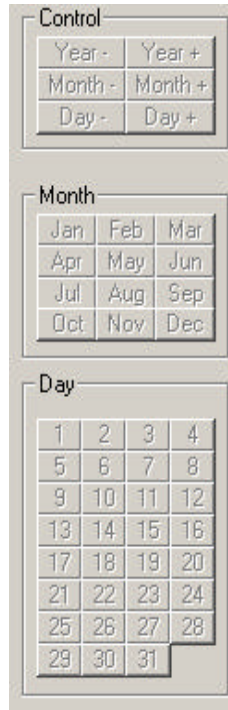


Figure 18 - The Calendar Bar

The Calendar Bar is located on the right side of the main display and is illustrated in Figure 18. This enables the user to easily navigate through the data, for the currently selected record. To jump to a particular day or month, the user should left click with the mouse on the desired button. Note: SolarLink will disable buttons, which have no associated data.

Displaying Information

The data may be displayed in 3 different formats. These formats are detailed in the following sections.

Temperature Graph Mode

Figure 19 illustrates an example of the Temperature Graph Mode.

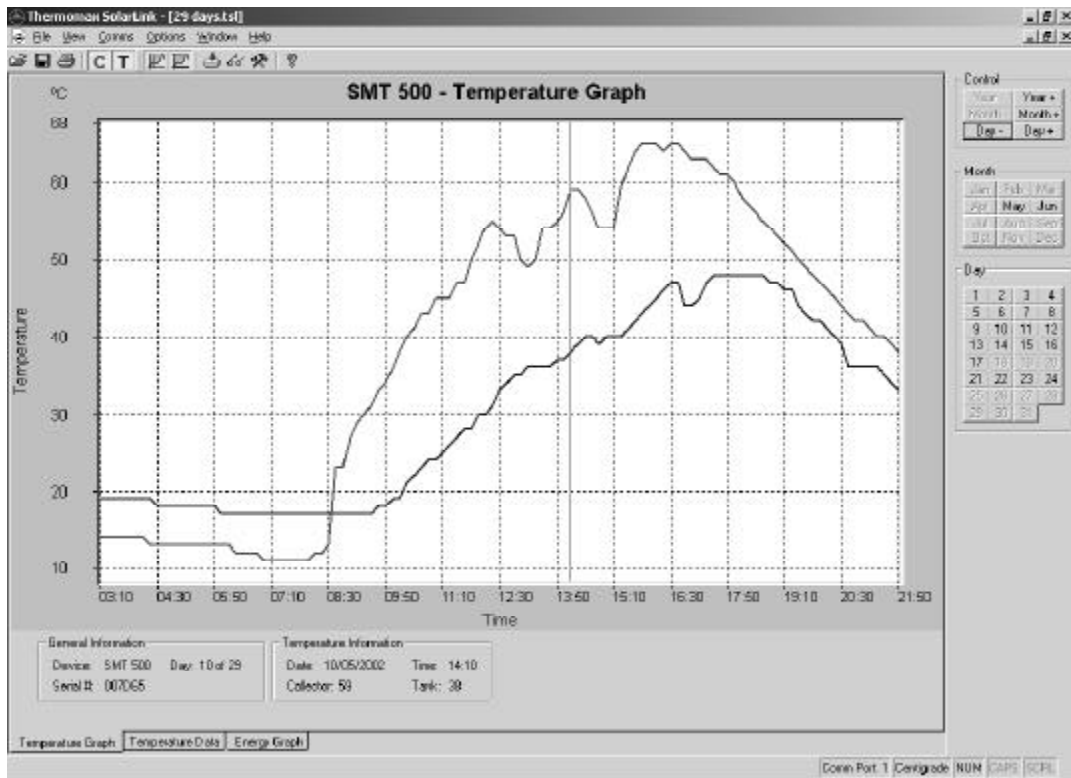


Figure 19 - Temperature Graph

The graphic mode enables the user to view the temperature channels for one day on the same axis. The user may view the temperature in either Centigrade or Fahrenheit. The channel labels are displayed in the same colour as their corresponding channel beside the y-axis.

Table View Mode

Figure 20 illustrates an example of the Temperature Table View

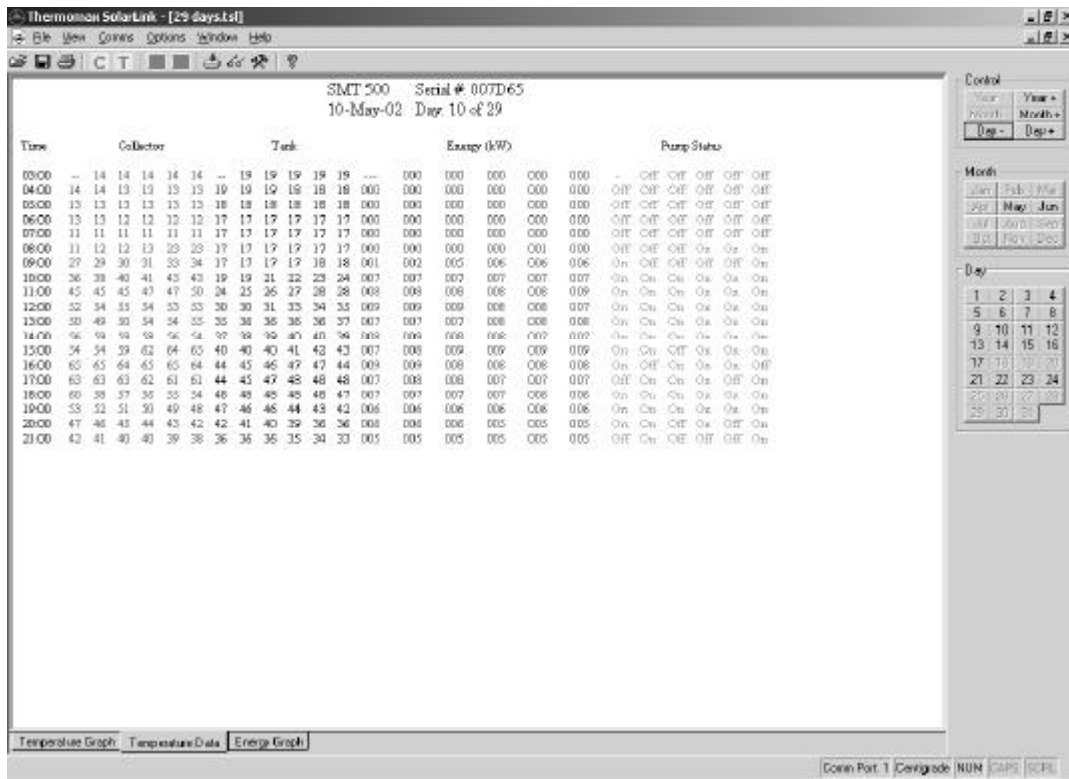


Figure 20 - Table View

This view displays the actual temperature data for the current day in table format. The temperature can be view in either Centigrade or Fahrenheit.

Energy Graph Mode

Figure 21 illustrates an example of the Energy Graph Mode.

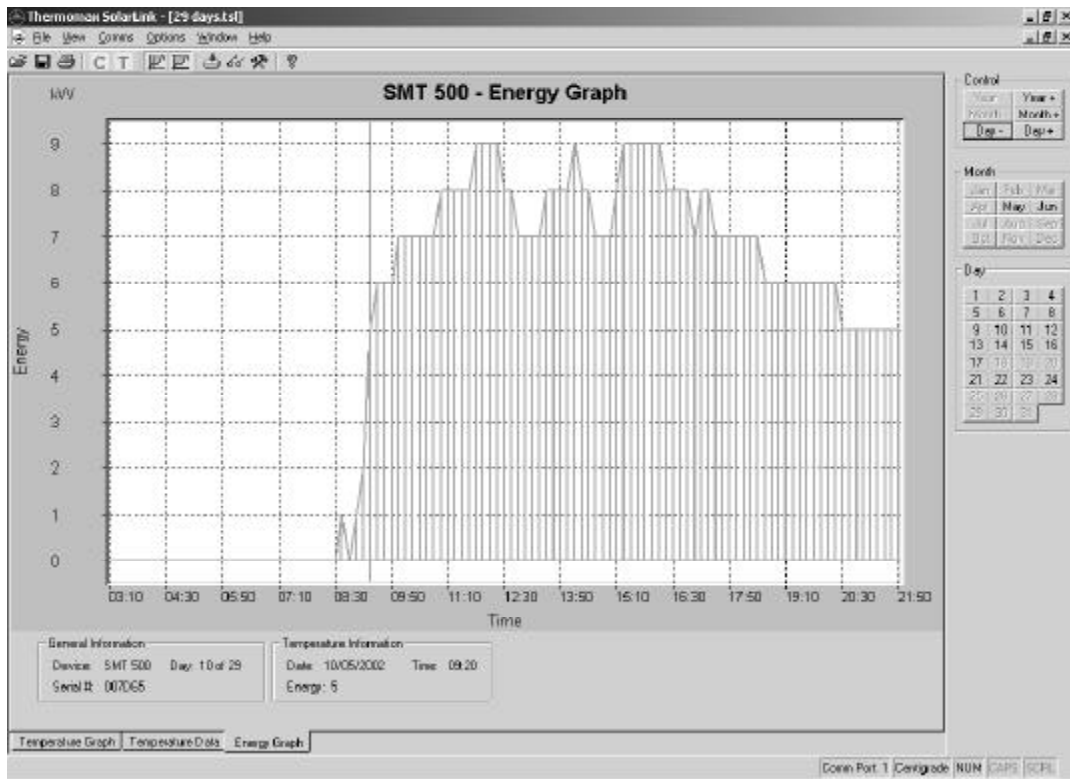


Figure 21 - Energy Graph

The graphic mode enables the user to view the energy data. The user may view the temperature in either Centigrade or Fahrenheit. The channel labels are displayed in the same colour as their corresponding channel beside the y-axis.